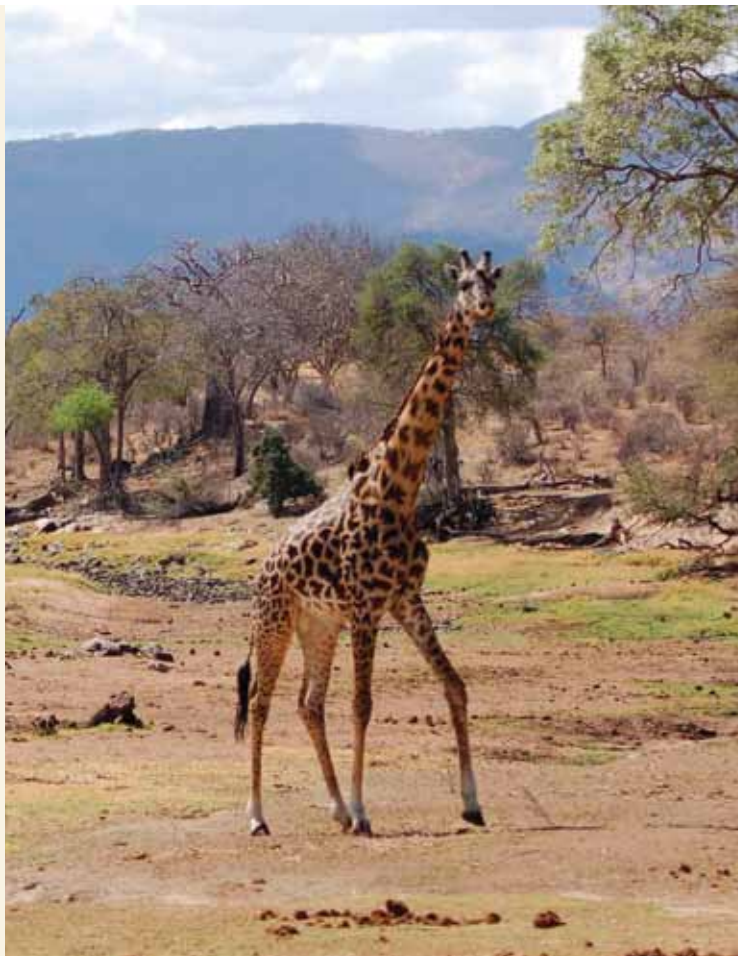


CITIZENS ENGAGING IN GOVERNMENT OVERSIGHT IN NATURAL RESOURCES MANAGEMENT (CEGO - NRM) THROUGH SOCIAL ACCOUNTABILITY MONITORING (SAM)

This project aims at making sure that government leaders and service providers are held fully responsible by the citizens when they fail to deliver the required services stipulated in their strategic plans, annual work plans and district budgets. They are equally required to prepare, submit and disseminate to their citizens implementation reports at the end of the financial year. They are so accountable to the citizens because of the passage and approval of the strategic plans and district budgets by citizens representative organs which are: the Parliament, District Council, Village Assembly; and various committees of those organs. Most key aspects of SAM are:

- To convince the relevant authorities to set budgetary and plan priorities in accordance with current needs of the people;
- To ensure and enhance the integrity of public authorities and create functioning complaint mechanisms;
- To properly distribute human resource in the natural resource sector in line with its needs;
- To involve the public and NGOs in implementing, follow-up, and monitoring public authorities; and
- To follow-up on various reporting systems of activities implementation in the natural resource sector.

When citizens demand justifications, explanations and corrective actions taken by duty bearers they help the country to build a strong system and culture of holding accountable duty bearers.



FOR MORE INFORMATION PLEASE CONTACT:

Lawyers' Environmental Action Team (LEAT)
Mazingira House, Mazingira Street
Mikocheni B, P.O. Box 12605, Dar es Salaam
Phone / Fax: 255-22-2780859
Email: info@leattz.org, Website: www.leat.or.tz



CITIZENS ENGAGING IN GOVERNMENT OVERSIGHT IN NATURAL RESOURCES MANAGEMENT (CEGO-NRM) THROUGH SOCIAL ACCOUNTABILITY MONITORING (SAM)



USAID
FROM THE AMERICAN PEOPLE

Prepared and Printed by LEAT under the generous support of USAID

WHAT IS SAM?

SAM is the fundamental human right where all persons/citizens in a country have the unquestionable right to obtain justifications and explanations from government leaders and institutions on the use and management of public resources and the performance of the public officials. Under SAM, the state is socially accountable whereby public officials are required to provide justifications and explanations on their performances and take corrective actions where public resources have not been used effectively in the realization of human rights and capabilities.



THE STAKEHOLDERS OF SAM

- Citizens;
- District Commissioners;
- District Executive Directors;
- Village Land and Environmental and Natural Resources Committees;
- SAM teams;
- Councilors;
- Non-Governmental Organizations (NGOs); and
- Village Chairpersons and Ward Executive Officers.

WHAT ARE THE PROCESSES OF SAM?

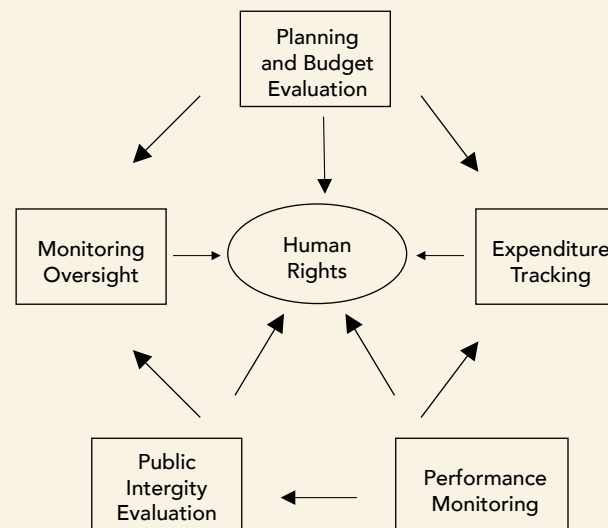
SAM is made up of 5 key processes:

- Resource Allocation and Strategic Planning;
- Expenditure Management;
- Performance Management;
- Public Integrity Management; and
- Oversight.

IMPORTANCE OF SAM

SAM serves the following critical functions:

1. Assisting in follow-ups and analysis of strategic plans;
2. Putting in place a follow-up mechanism of activities implementation;
3. Ensuring that there are close supervision systems of implementers;
4. Ensuring that government implementers (duty bearers) are held responsible and accountable; and
5. Establishing proper and closer supervision system by the rights holders (citizens) on discharge of responsibility by relevant public authorities.



The right to social accountability asserts:

That every state (*as duty bearer*) is obliged to:

- Justify and explain its decisions and actions; and
- Take timely corrective action.

All citizens, as rights holders, have the right to:

- Demand and receive these justifications and explanations and corrective actions from the state; and
- Take actions where there is improper or poor implementation by closely adhering to the rights and human needs.

